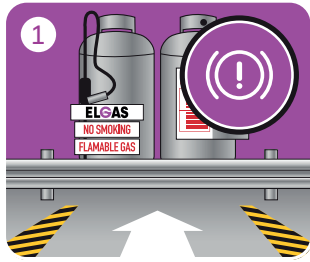


FORKLIFT CYLINDER FILLING BY PUMP PROCEDURE



Please ensure all site rules are observed in conjunction with the safe handling procedures outlined below.

Before you start filling forklift cylinders, make sure there is no smoking, or other ignition sources in the exclusion zone.



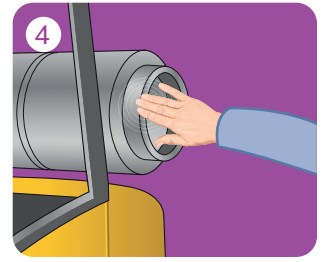
Make sure the forklift is parked safely in the designated area with the handbrake on and the engine turned off.



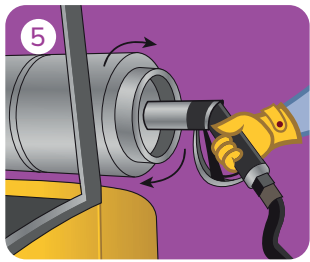
Always wear your PPE, including protective gloves, eye protection, non-synthetic long sleeve shirt, long trousers, and enclosed footwear.



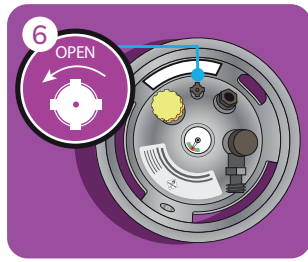
Check LPG cylinder test date. The date stamp must not be older than 10 years and the cylinder must not be damaged by dents or corrosion.



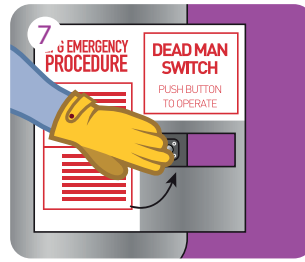
Ensure the forklift cylinder is correctly positioned, with the relief valve at the top. Touch the cylinder to be filled with a bare hand to discharge electricity before putting on protective gloves.



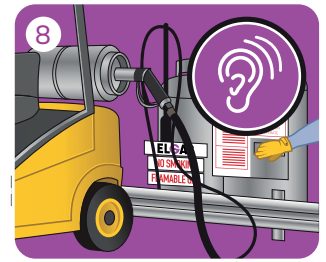
Remove dust cap from cylinder and ensure there are no obstructions or dirt in valve. Connect filler nozzle, turning clockwise and ensuring a tight connection.



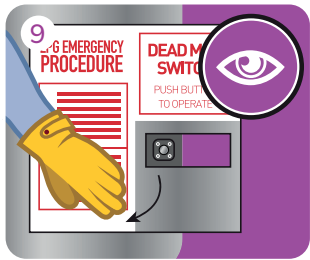
WHERE NO AFL VALVE FITTED: Cylinder must be disconnected and placed on the ground or a suitable metal stand. Open bleed screw on forklift cylinder



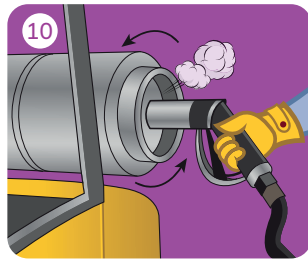
DEADMAN SYSTEM: Latch nozzle in open position then press and hold the dead man's button to start pump and commence fill.
NO DEADMAN SYSTEM: Start transfer pump and squeeze filler nozzle to commence filling. Remain in attendance during filling.



WHERE AFL VALVE FITTED: When AFL valve automation is heard.
DEADMAN SYSTEM: Release dead man's button.
NO DEADMAN SYSTEM: Release filler nozzle and stop transfer pump.



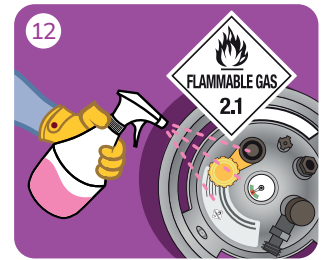
WHERE NO AFL VALVE FITTED: When the first spurt of liquid LPG appears at the bleed valve.
DEADMAN SYSTEM: Release dead man's button.
NO DEADMAN SYSTEM: Release filler nozzle and stop transfer pump. Close bleed screw when the white liquid cloud disappears.



A small amount of LPG discharge will occur when the filler nozzle is released. Unscrew filler nozzle anti-clockwise.



Place nozzle back into holder.



Check cylinder fittings for leaks with soapy water. Replace dust cap on cylinder valve. Do not operate forklift if any leaks present.

IF THERE IS AN EMERGENCY

For Emergencies (Police, Fire or Ambulance) contact 000

Emergency response number: **1800 819 783** or check for a number listed on your cylinder. ELGAS can be contacted 24 hours a day on **131 161**

Please ensure you follow your sites Emergency Procedures and notify your ELGAS representative of any incident.

